

HDHD1 (5Z16) Mouse Monoclonal antibody
HDHD1 (5Z16) Mouse Monoclonal antibody
Catalog # AP93866**Specification**

HDHD1 (5Z16) Mouse Monoclonal antibody - Product Information

Application	WB, IHC
Primary Accession	Q08623
Reactivity	Rat, Human, Mouse, Monkey, Dog
Clonality	Monoclonal
Calculated MW	25249

HDHD1 (5Z16) Mouse Monoclonal antibody - Additional Information**Gene ID** 8226**Other Names**

Pseudouridine-5'-phosphatase {ECO:0000312|HGNC:HGNC:16818}, 3.1.3.96, Haloacid dehalogenase-like hydrolase domain-containing protein 1, Haloacid dehalogenase-like hydrolase domain-containing protein 1A, Protein GS1, Pseudouridine-5'-monophosphatase, 5'-PsiMPase, PUDP (HGNC:16818)

Dilution

WB~~1:1000
IHC~~1:100~500

Storage Conditions

-20°C

HDHD1 (5Z16) Mouse Monoclonal antibody - Protein Information**Name** PUDP ([HGNC:16818](#))**Function**

Dephosphorylates pseudouridine 5'-phosphate, a potential intermediate in rRNA degradation. Pseudouridine is then excreted intact in urine.

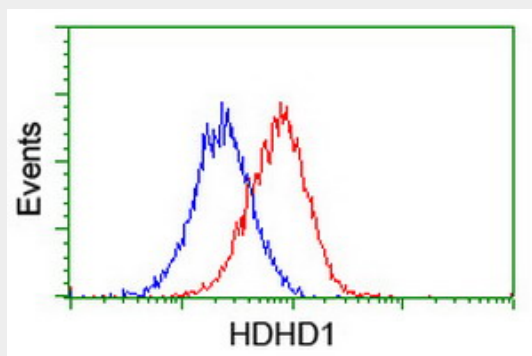
HDHD1 (5Z16) Mouse Monoclonal antibody - Protocols

Provided below are standard protocols that you may find useful for product applications.

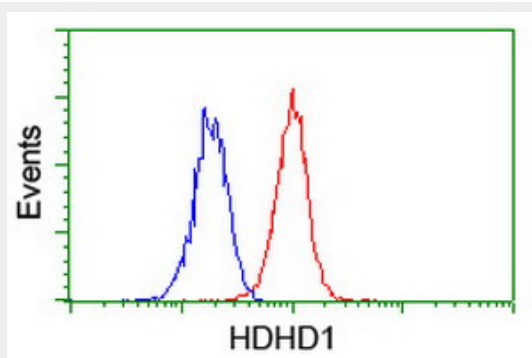
- [Western Blot](#)
- [Blocking Peptides](#)
- [Dot Blot](#)
- [Immunohistochemistry](#)

- [Immunofluorescence](#)
- [Immunoprecipitation](#)
- [Flow Cytometry](#)
- [Cell Culture](#)

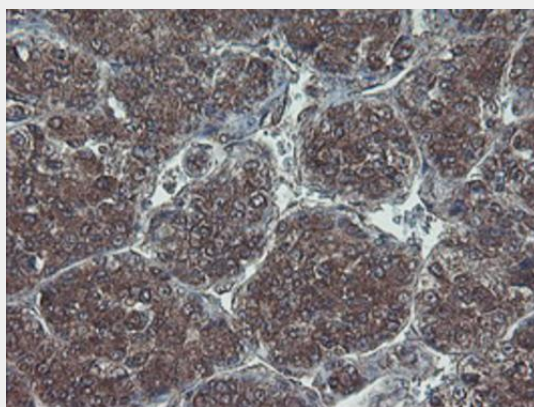
HDHD1 (5Z16) Mouse Monoclonal antibody - Images



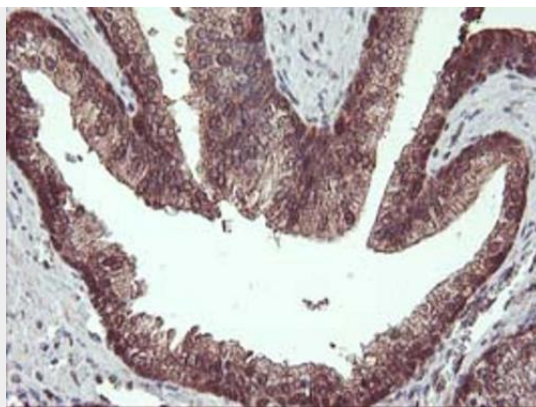
Flow cytometric Analysis of HeLa cells, using anti-HDHD1 antibody (AP93866), (Red), compared to a nonspecific negative control antibody, (Blue).



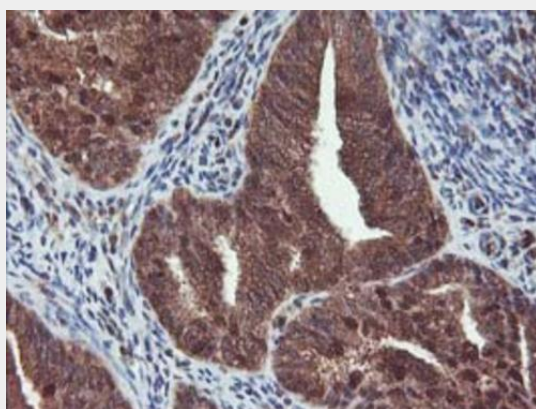
Flow cytometric Analysis of Jurkat cells, using anti-HDHD1 antibody (AP93866), (Red), compared to a nonspecific negative control antibody, (Blue).



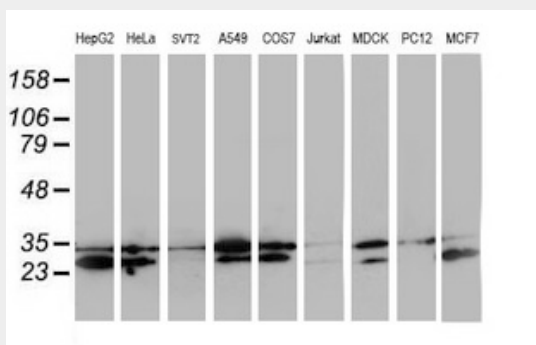
Immunohistochemical staining of paraffin-embedded Carcinoma of Human liver tissue using anti-HDHD1 mouse monoclonal antibody. (Heat-induced epitope retrieval by 10mM citric buffer, pH6.0, 100°C for 10min, AP93866)



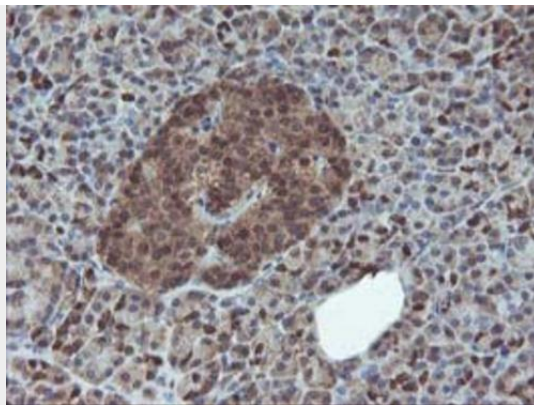
Immunohistochemical staining of paraffin-embedded Human prostate tissue within the normal limits using anti-HDHD1 mouse monoclonal antibody. (Heat-induced epitope retrieval by 10mM citric buffer, pH6.0, 100°C for 10min, AP93866)



Immunohistochemical staining of paraffin-embedded Adenocarcinoma of Human endometrium tissue using anti-HDHD1 mouse monoclonal antibody. (Heat-induced epitope retrieval by 10mM citric buffer, pH6.0, 100°C for 10min, AP93866)



Western blot analysis of extracts (35ug) from 9 different cell lines by using anti-HDHD1 monoclonal antibody.



Immunohistochemical staining of paraffin-embedded Human pancreas tissue within the normal limits using anti-HDHD1 mouse monoclonal antibody. (Heat-induced epitope retrieval by 10mM citric buffer, pH6.0, 100°C for 10min, AP93866)

HDHD1 (5Z16) Mouse Monoclonal antibody - Background

This gene encodes a member of the haloacid dehalogenase-like (HAD) hydrolase superfamily. The encoded protein has no known biological function. This gene has a pseudogene on chromosome 1. Multiple alternatively spliced transcript variants encoding different isoforms have been identified. [provided by RefSeq]